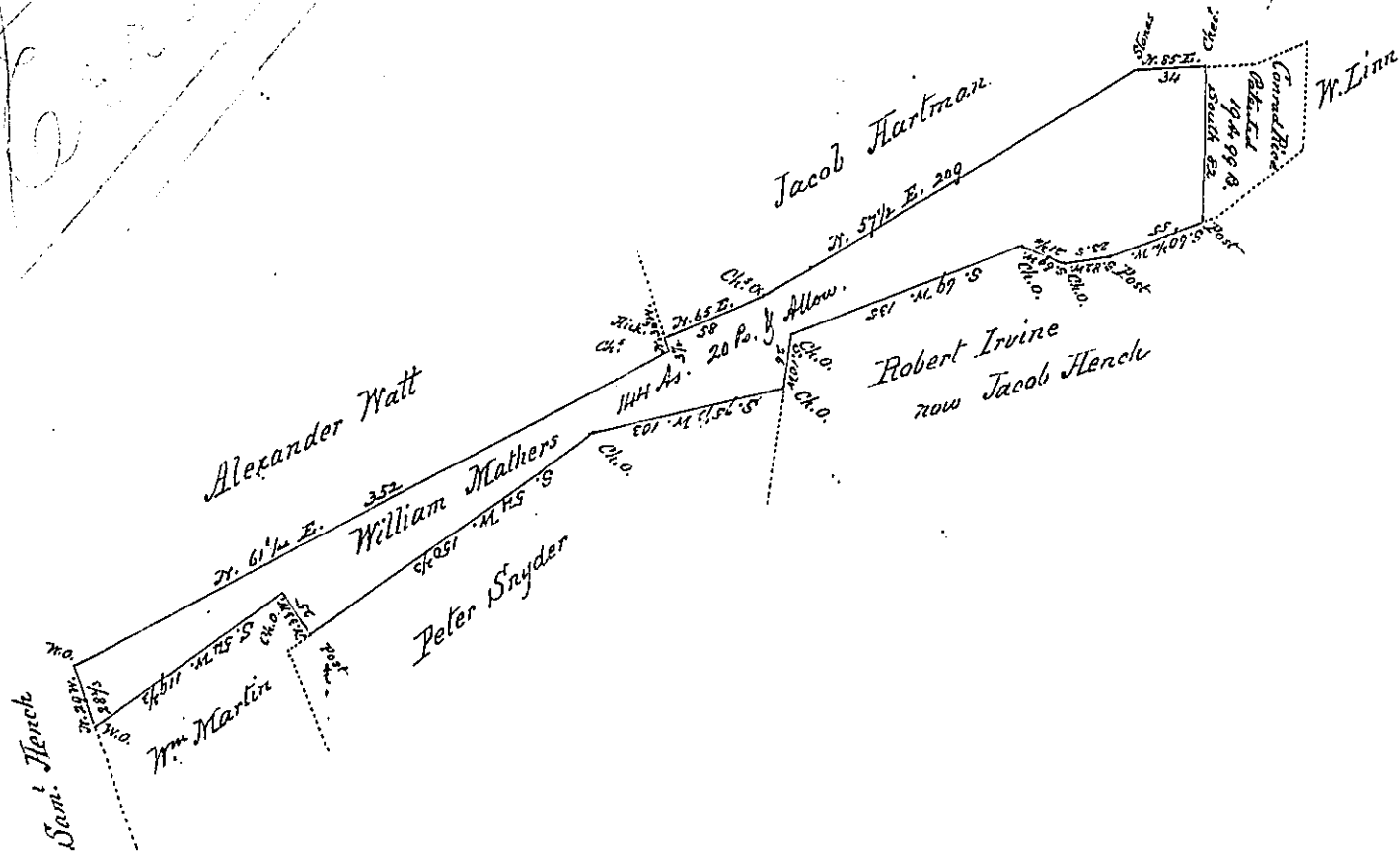


Error - copied in next book. 2

Misread work in next book

Errors



Draft of a tract of land situate in Saville Township, Perry County
 containing 144 A. 20 P. and allowance Surveyed for William Mathers
 the 6th day of May 1840, being part of a larger tract of 163.19 and allowance
 surveyed in pursuance of a warrant granted to James Mathers dated
 the 25th day of May 1797

J. A. Galbraith C. S.

To Hon Jacob M. Campbell }
 Surveyor General }

IN TESTIMONY that the above is a copy of the original remaining on file in the
 Department of Internal Affairs of Pennsylvania, made con-
 formably to an Act of Assembly approved the 16th day of
 February, 1833, I have hereunto set my Hand and caused
 the Seal of said Department to be affixed at Harrisburg, this

Twenty Fourth day of October 1879

Arnon H. Dunkel
 Secretary of Internal Affairs